

ELKAY

RESERVE SELECTION

AN EXCLUSIVE ELKAY PROGRAM

LUSTERTONE
ICONIX®



FIRECLAY
WORKSTATION
SINK KITS



QUARTZ LUXE®



CIRCUIT
CHEF®



CROSTOWN®
FARMHOUSE
WORKSTATION

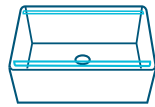
THAT'S ELKAY

Elkay® has taken pride in crafting and manufacturing residential sinks for more than a century. From stainless steel to quartz, innovation is at the heart of everything we do. For designers, builders and homeowners who are looking for something special — a sink that goes above and beyond everyday looks and functionality — Elkay has created Reserve Selection. You won't find this collection at a local home center.

Our exclusive, handpicked assortment of sinks is available, in-store and online, through authorized Elkay traditional wholesale distribution partners. These partners employ experienced consultants, who work carefully to select standout products for any space.

*Reserve Selection includes sinks and sink kits.
Accessories are sold separately.*

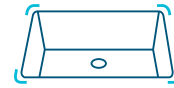
Our Reserve Selection offerings are MAP protected.



FARMHOUSE
WORKSTATION



ACCESSORIES
INCLUDED



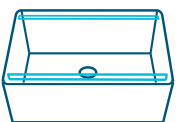
TIGHT
CORNERS

CROSTOWN FARMHOUSE WORKSTATION

The Crosstown® farmhouse workstation is ideal for homeowners looking to add unexpected style – with the bold apron front – and maximize their workspace. Included accessories slide along a built-in sink ledge allowing you to conveniently go from washing and chopping to cleaning without cluttering the counter.



EFRUFF30179RW



FARMHOUSE WORKSTATION

Slide accessories along built-in sink ledge to optimize your workspace and go from meal prep to clean up in seconds.



1.



2.

- 1. EFRUFFA33179RW
- 2. EFRUFFA33179RW



1.



ACCESSORIES INCLUDED

Cutting board, wood-handled colander, roll-up drying rack, drain and bottom grid are included with all Crosstown workstation sinks. Wood-handled drying rack available with select sinks.



1. EFRUFFA33179RW
2. EFRUFF30179RW

2.

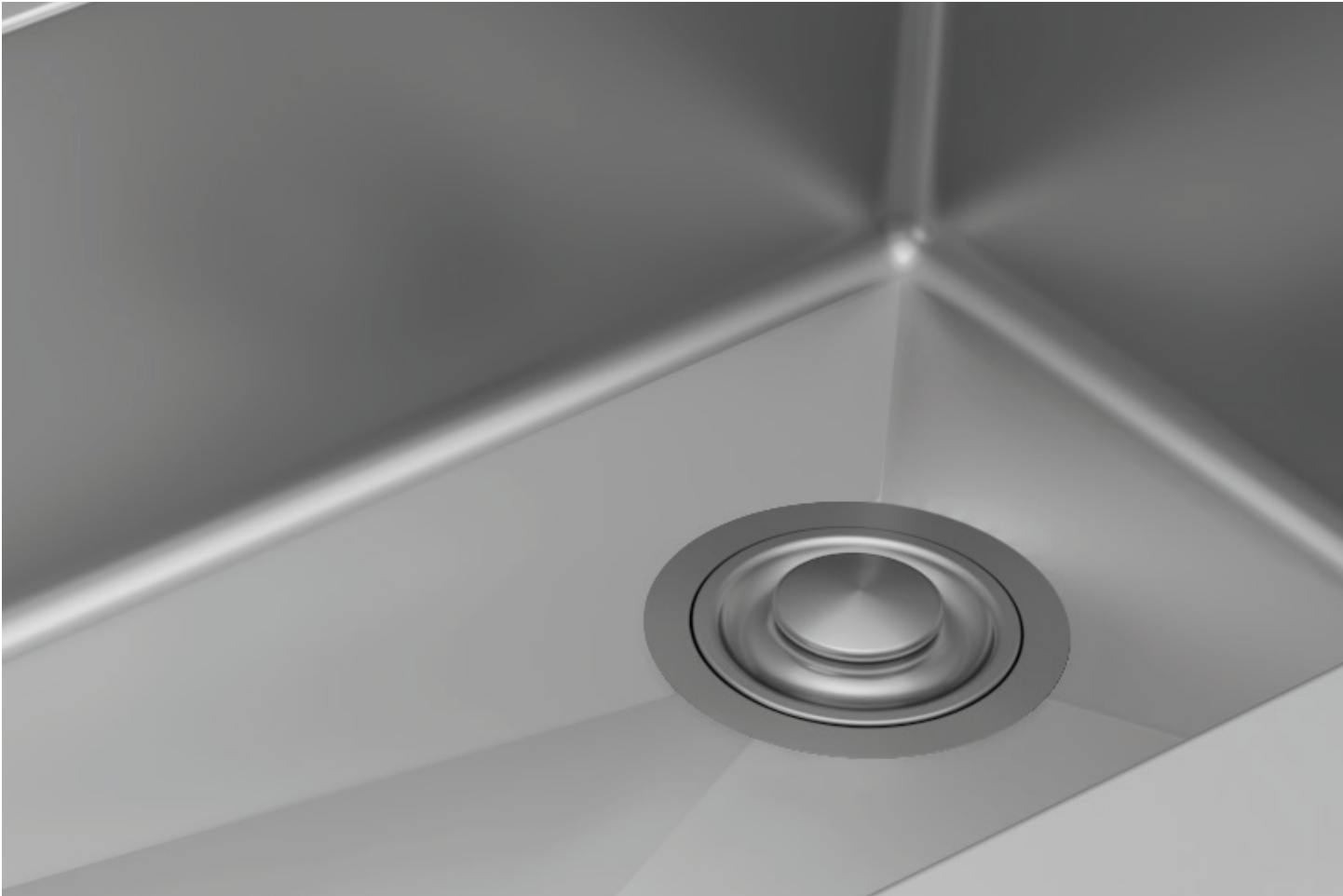


1.



TIGHT CORNERS

Fresh, geometric design offers straight sidewalls and a flat bottom for a modern look and more usable space.



- 1. EFRUFFA33179RW
- 2. EFRUFF30179RW

2.



PERFECT DRAIN®
(on select models)



FORGIVING
FINISH



ENGINEERED
FOR STYLE

LUSTERTONE ICONIX

An Elkay Lustertone Iconix® stainless steel sink brings the winning combination of a sophisticated look and a forgiving finish to the home. The modern bowl shape is perfect for every kitchen, delivering style for today, tomorrow and every day. Deeper scratches are repairable with an Elkay stainless steel sink restoration kit.

Available in 16-gauge stainless steel with Perfect Drain® or in 18-gauge with a standard drain.



ELUHH3017TPD



1.



PERFECT DRAIN

The edgeless design eliminates the gap around the drain for a cleaner, more hygienic sink; food scraps go right down the drain. Available on 16-gauge stainless steel models.



2.

- 1. ELUHH3017TPD
- 2. ELUHH3120LTPD
- 3. LKPD1



3.



FORGIVING FINISH

The durable finish of Lustertone Iconix sinks offers scratch forgiveness, standing up to everyday use. Deep scratches are repairable with an Elkay stainless restoration kit.



1.



2.

- 1. ELUHH2115TPD
- 2. ELUHH1316TPD



ENGINEERED FOR STYLE

Slightly rounded corners mean more workspace in the sink. The sophisticated bowl shape maximizes space and makes cleanup quick and easy. Items sit flat in the bottom of the sink and glassware is less likely to tip over and break.



1.

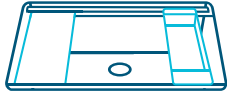


2.



3.

- 1. ELUHH3017TPD
- 2. LKPD1
- 3. ELUH3120RT



TWO-TIER
WORKSTATION SINK



ACCESSORIES
INCLUDED



PREMIUM
STAINLESS STEEL

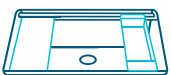
CIRCUIT CHEF

Intelligently engineered in every way, Circuit Chef® stainless steel sinks are the ultimate workstations. They're designed with two ledges that provide two tiers of workspace, making it easier to move from one task to the next. Custom colanders sit on and slide along the bottom ledge while our dual-purpose cutting boards can be rotated for use on either ledge. Setting them on top to cover the sink extends the countertop for extra entertaining space.

Sinks are available in three different sizes and are made of premium 16-gauge stainless steel with a brushed, satin finish. Kits include either black polymer, white polymer or cherry wood cutting boards, protective bottom grids, and small, large and low-profile colanders.



CS45WPK



TWO-TIER WORKSTATION SINK

Multitasking is effortless with accessories that slide along two levels of workspace.



1.



2.

- 1. CS60CWK
- 2. CS30WPK



1.



ACCESSORIES INCLUDED

Sinks come with custom-fit cutting boards, colanders and bottom grids to simplify prep and cleanup.

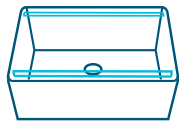


2.



3.

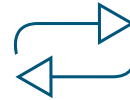
- 1. CS45
- 2. CS60BPK
- 3. CS60CWK



FARMHOUSE
WORKSTATION



DURABILITY



REVERSIBLE
DESIGN

FIRECLAY WORKSTATION SINK KITS

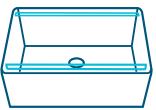
Fireclay sinks have a timeless appeal that has been around for decades. The attractive porcelain glaze gives the sink a glossy finish that is easy to clean. Beauty and durability come together in a scratch- and stain-resistant surface. Kits include a walnut cutting board, protective bottom grid and drain.



SWUF13020CBWH



1.



FARMHOUSE WORKSTATION

The built-in ledge allows for working right over the sink, saving precious counter space. The sink comes with a rich walnut cutting board to go from meal prep to clean up in seconds.



2.

- 1. SWUF13020CBWH
- 2. SWUF13020CBWH
- 3. SWUF13620CBWH



3.



DURABILITY

These hardworking sinks are handcrafted and fired at high temperatures for long-lasting durability. The surface is scratch and stain resistant.



1.



2.

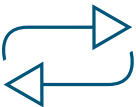


3.

1. SWUF13020CBWH

2. SWUF13020CBWH

3. SWUF13020CBWH



REVERSIBLE DESIGN

Choose from two design options, install the sink with either a traditional flat front or with a decorative band at the top.



1.



2.

1. SWUF13020CBWH

2. SWUF13320CBWH



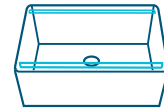
DEEP BOWLS



SUSTAINABLY MADE
(on select models)



PERFECT DRAIN®
(on select models)



FARMHOUSE
WORKSTATION

QUARTZ LUXE

Quartz Luxe® sinks are exceptionally durable. Their tight formulation of quartz particles results in a silky smooth surface that resist dirt, food and stains. Plus, they're impact, scratch and stain resistant, and heat safe up to 535° F.

While these sinks are designed to take on the toughest kitchen tasks, they're just as beautiful as they are strong with stunning color options. This collection has just what your space needs for a breathtaking transformation.



ARCTIC FOX
(FX) 



CAVIAR
(CA)



CHARCOAL
(CH)



CHESTNUT
(CN)



JUBILEE
(JB)



OBSIDIAN
(OX) 



PARCHMENT
(PM)



RICOTTA
(RT)



SANDSTONE
(SN) 



SILVERMIST
(SM)



ELXRU1332SM0



1.




DEEP BOWLS

High-capacity single bowl offers more room inside for stacking dishes, filling stockpots, and handling large baking sheets and roasters.



2.

- 1. ELXUFP362010SM0
- 2. ELXUFP362010FX0 
- 3. ELXHU3322RJB0



3.



SUSTAINABLY MADE

Select models are crafted from approximately 99% natural, renewable, or recycled raw materials, including hard natural quartz sand and natural color additives.






1.



2.



3.

- 1. ELXU332FX0 
- 2. ELXUFP362010DNO 
- 3. ELXHU332RSNO 



PERFECT DRAIN

Sinks featuring Elkay's Perfect Drain have no gap to collect food, giving them a stylish, modern look.



1.

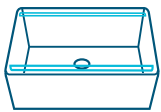


2.

1. ELXUFP362010SM0, LKPDQD1, LKPDQS
2. LKPDQ1CR



1.



FARMHOUSE WORKSTATION

Built-in ledge allows you to work over the sink, saving precious counter space.



- 1. ELXUFP362010SMO
- 2. ELXUFP362010JB0

2.

CROSTOWN FARMHOUSE WORKSTATION

Wood cutting board, wood-handled colander, drying rack, roll-up drying rack, bottom grid(s) and drain(s) are included with workstation sinks.



EFRUFF24179RW

25-7/8" x 20-1/4" x 10"
Min. cabinet size: 27"



EFRUFF30179RW

31-7/8" x 20-1/4" x 10"
Min. cabinet size: 33"



EFRUFF33179RW

34-7/8" x 20-1/4" x 10"
Min. cabinet size: 36"



EFRUFFA33179RW

34-7/8" x 20-1/4" x 10"
Min. cabinet size: 36"



1. EFRUFFA33179RW

LUSTERTONE ICONIX

Lustertone Iconix undermount sinks are also available as kits, which include drain(s) and bottom grid(s).

16-gauge Single Bowl With Perfect Drain



ELUHH3017TPD 

32-1/2" x 19-1/2" x 9"
Min. cabinet size: 36"
Available as kits



ELUHH2115TPD 

23-1/2" x 18-1/4" x 9"
Min. cabinet size: 27"
Available as kits



ELUHH1616TPD

18-1/2" x 18-1/2" x 9"
Min. cabinet size: 21"
Available as a kit



ELUHH1316TPD

16" x 18-1/2" x 8"
Min. cabinet size: 21"
Available as a kit



ELUH3017T 

32-1/2" x 19-1/2" x 9"
Min. cabinet size: 36"
Available as kits



ELUH2115T 

23-1/2" x 18-1/4" x 9"
Min. cabinet size: 27"
Available as kits



ELUH1616T

18-1/2" x 18-1/2" x 9"
Min. cabinet size: 21"
Available as a kit



ELUH1316T

16" x 18-1/2" x 8"
Min. cabinet size: 21"
Available as a kit



Sink Kit With Filtered Faucet

Kit includes faucet and water filter to provide cleaner, better-tasting water on demand. Faucet features a three-function handle for hot, cold and filtered water.

LUSTERTONE ICONIX

Lustertone Iconix undermount sinks are also available as kits, which include drain(s) and bottom grid(s).

16-gauge Double Bowl With Perfect Drain



ELUHH3118TPD 

32-3/4" x 19-1/2" x 9"
Min. cabinet size: 36"
Available as a kit



ELUHH3120LTPD 

31-1/4" x 20-1/2" x 9-7/8"
Min. cabinet size: 36"
Available as a kit



ELUHH3120RTPD 

31-1/4" x 20-1/2" x 9-7/8"
Min. cabinet size: 36"
Available as a kit

18-gauge Double Bowl With Standard Drain



ELUH3118T 

32-3/4" x 19-1/2" x 9"
Min. cabinet size: 36"
Available as a kit



ELUH3120LT 

31-1/4" x 20-1/2" x 9-7/8"
Min. cabinet size: 36"
Available as a kit



ELUH3120RT 

31-1/4" x 20-1/2" x 9-7/8"
Min. cabinet size: 36"
Available as a kit



1. ELUHH3118TPD

CIRCUIT CHEF

Circuit Chef workstation sinks include: black polymer, white polymer or cherry cutting boards, bottom grids, and small, large and low-profile colanders.



CS30BPK

32-1/2" x 20-1/2" x 10"
Min. cabinet size: 36"



CS30WPK

32-1/2" x 20-1/2" x 10"
Min. cabinet size: 36"



CS30CWK

32-1/2" x 20-1/2" x 10"
Min. cabinet size: 36"



CS45BPK

45-1/2" x 20-1/2" x 10"
Min. cabinet size: 48"



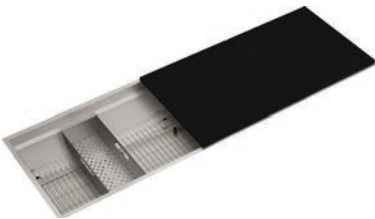
CS45WPK

45-1/2" x 20-1/2" x 10"
Min. cabinet size: 48"



CS45CWK

45-1/2" x 20-1/2" x 10"
Min. cabinet size: 48"



CS60BPK

59-1/2" x 20-1/2" x 10"
Min. cabinet size: 63"



CS60WPK

59-1/2" x 20-1/2" x 10"
Min. cabinet size: 63"



CS60CWK

59-1/2" x 20-1/2" x 10"
Min. cabinet size: 63"

FIRECLAY WORKSTATION SINK KITS

Workstation kits include: A walnut cutting board, drain(s), bottom grid(s), and maintenance kit that includes a cleaning pad and microfiber towel.



SWUF13620CBWH

36" x 18-13/16" x 10-1/8"
Min. cabinet size: 39"



SWUF13320CBWH

33" x 18-13/16" x 10-1/8"
Min. cabinet size: 36"



SWUF13020CBWH

30" x 18-13/16" x 10-1/8"
Min. cabinet size: 33"



F23320CBWHC

33" x 19-15/16" x 10-1/8"
Min. cabinet size: 36"



SWUF3320WH

33" x 19-15/16" x 10-1/8"
Min. cabinet size: 36"



1. SWUF3320WH

QUARTZ LUXE

Quartz Luxe sinks are available in four installation styles, single or double bowl configurations, and ten unique colors.

Farmhouse



ELXUFP362010

Shown in Ricotta with workstation and Perfect Drain
35-7/8" x 21-9/16" x 9"
Min. cabinet size: 36"



ELXUFP3620

Shown in Silvermist with Perfect Drain
35-7/8" x 20-15/16" x 9"
Min. cabinet size: 36"

Single Bowl Undermount



ELXRUP3620

Shown in Caviar with Perfect Drain
35-7/8" x 19" x 9"
Min. cabinet size: 36"



ELXRU13322

Shown in Charcoal
33" x 18-7/16" x 9-7/16"
Min. cabinet size: 36"



ELXU2522

Shown in Parchment
24-5/8" x 18-1/2" x 9-1/2"
Min. cabinet size: 30"

Single Bowl Dual Mount



ELX1616

Shown in Jubilee
15-3/4" x 15-3/4" x 7-11/16"
Min. cabinet size: 21"

Single Bowl Drop-in



ELXR13322

Shown in Caviar
33" x 20-7/8" x 9-7/16"
Min. cabinet size: 36"



ELX2522

Shown in Ricotta
25" x 22" x 9-1/2"
Min. cabinet size: 30"

QUARTZ LUXE

Quartz Luxe sinks are available in four installation styles, single or double bowl configurations, and nine unique colors.

Double Bowl Undermount



ELXHU3322R

Shown in Sandstone
with Aqua Divide™
33" x 22" x 10"
Min. cabinet size: 36"



ELXU250R

Shown in Charcoal
33" x 20-1/2" x 9-1/2"
Min. cabinet size: 36"



ELXDULB3322

Shown in Ricotta
with Aqua Divide™
33" x 19" x 10"
Min. cabinet size: 36"



ELXU3322

Shown in Obsidian
33" x 18-1/2" x 9-1/2"
Min. cabinet size: 36"



ELXHU3220R

Shown in Parchment
33" x 22" x 10"
Min. cabinet size: 36"



1. ELXU3322DN0

Double Bowl Drop-in



ELXH3322R

Shown in Jubilee
with Aqua Divide
33" x 22" x 10"
Min. cabinet size: 36"



ELX250R

Shown in Caviar
33" x 22" x 9-1/2"
Min. cabinet size: 36"



ELX3322

Shown in Chestnut
33" x 22" x 9-1/2"
Min. cabinet size: 36"



1. ELXH3322RRTO



ELUH3017T

About Zurn Elkay Water Solutions

Headquartered in Milwaukee, Wisconsin, Zurn Elkay Water Solutions is a growth-oriented, pure-play water business that designs, procures, manufactures, and markets what we believe is the broadest sustainable product portfolio of solutions to improve health, human safety, and the environment. The Zurn Elkay product portfolio includes professional grade water control and safety, water distribution and drainage, drinking water, finish plumbing, hygienic, environmental and site works products for public and private spaces.

ELKAY

1333 Butterfield Road, Suite 200 | Downers Grove, IL 60515
630.574.8484 | elkay.com | ©2024 Elkay Manufacturing Company

(rev. 2/24) 330-009